

# **Masters Quarry**

## **Site Biodiversity Action Plan**



**Prepared: May 2006**

**Updated: March 2014  
Dec 2022, Nov 2025**

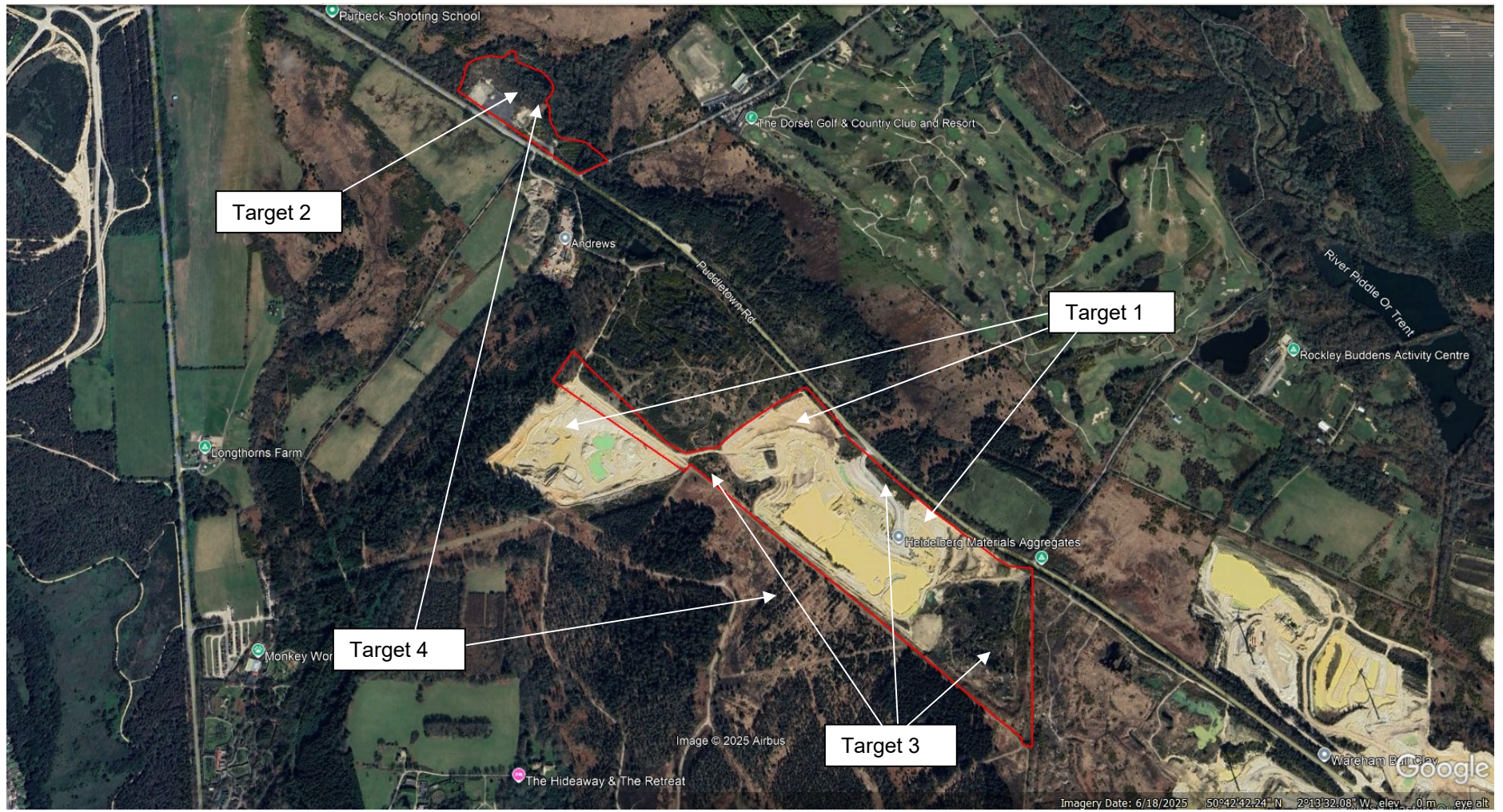
### Site Information- Masters Quarry

<b>Site Name and Location (incl. Grid Ref.)</b>	Masters Quarry SY 86196 89159 (Hyde Site Entrance)
<b>Hanson Company</b>	Hanson Aggregates
<b>BAP(s) that will be targeted</b>	UK BAP Dorset Biodiversity Strategy
<b>Habitat(s) to be developed</b>	UK-BAP Priority habitats: lowland heathland and lowland dry acid grassland
<b>BAP species to be encouraged</b>	Smooth snake <i>Coronella austriaca</i> , sand lizard <i>Lacerta agilis</i> , nightjar <i>Caprimulgus europaeus</i> , Dartford warbler <i>Sylvia undata</i> , heath bee-fly <i>Bombylius minor</i> , mottled bee-fly <i>Thyridanthrax fenestratus</i> , mason wasp <i>Pseudopipona herrichii</i> , marsh clubmoss <i>Lycopodiella inundata</i> ,
<b>Designated Natural Area</b>	Dorset Heaths (81)
<b>Background and site description</b>	<p>The remaining parts of the Masters quarry complex now controlled and operated by HM along the Puddletown Road comprise Gallows Hill former blockworks, labs and offices, and the main Hyde Pit and Ladies Lookout extraction area, with plant site, office weighbridge and silt lagoons.</p> <p>Outside the ongoing extraction areas of c.27Ha there is a further c.9ha of important heathland habitat with varied plant communities including dry and wet heath, bog, pine and birch woodland, much of which was previously worked for minerals from 1960s to 1980s. The complex is important for rare reptiles and breeding nightjar, woodlark and Dartford warbler and is one of most important sites in the country for a number of rare heathland invertebrates.</p> <p>The c.20Ha Spratley Pits area of historic restored gravel workings, controlled and managed by the Company until 2022, was the focus of significant beneficial habitat management under a HLS.</p> <p>Heathland reclamation is required for remainder of Gallows Hill with recent trial areas being monitored.</p> <p>Continued extraction of sand in remaining permitted areas under the Hyde Pit ROMP consent is closely linked to phased reptile translocation programme under NE EPS licences and restoration of worked out areas to dry heath.</p>
<b>National Designations (SSSI, SAC, SPA, RAMSAR and NP) within 500m</b>	Stokeford Heaths SSSI, Dorset Heathlands SPA, Dorset Heathlands Ramsar Site, and Dorset Heaths SPA designations cover the majority of the land around Hyde pit, and remaining other non-SSSI land is designated as SNCI.
<b>Resource Requirements- comment on cost if appropriate</b>	Costs of reptile translocation generally covered by site Stripping budget, ongoing quarry restoration and annual management costs of surrounding heathland will be covered by the site's Restoration budget. Remaining areas of SSSI heathland are being considered for future ELMS and

	Stewardship agri-environment funding from NE.
<b>Contribution to biodiversity</b>	Ongoing restoration will increase and extend heathland habitat and will facilitate ongoing EPS licence applications. Management and restoration of peripheral heathland habitats will improve condition of SSSI units.
<b>Partners and Local initiatives</b>	Natural England, Dorset County Council, RSPB Nature After Minerals, Dorset Wildlife Trust, Local Nature Partnership and Wareham Arc project.
<b>Other documents supporting the site BAP</b>	Hyde ROMP application Environmental Statement and restoration design SLR drawing ref HD3/2 Hyde ROMP Condition 3&8 working & restoration schemes approved for Phase 1, Phase 2&3, and Phase 4 Ladies Lookout. Gallows Hill draft restoration concept plan W38m/143



## Site Layout Hyde Pit



## Action Plan

Item No.	Objective	Biodiversity Feature	Targets	Tasks	Assessing Indicator	Responsible Person	Timescale (Completion)
1	Appropriate restoration and management of Hyde Pit ROMP area	Heathland and woodland corridors and associated species e.g. sand lizards, smooth snakes, bat spp.	Design progressive working and restoration schemes in line with ROMP conditions 3&8	<p>1. Draw up schemes for all phases in conjunction with external consultants.</p> <p>2. Amend Condition 3&amp;8 schemes as necessary to reflect actual operational progress re Phase 1 lagoons, And retention of SSEN pylon infrastructure</p>	Plans and schemes submitted and approved by DCC	Lands and Planning Manager	Condition 3&8 schemes approved for Phase 1 in 2016, Phase 2&3 in 2020, and Phase 4 in 2022
			Maintain existing populations of European Protected Species and W&CA reptiles	1. Prepare EPS Licence applications for translocation, then implement fencing, capture and translocation works as per EPS Licence Method Statements	Licences approved and reptiles translocated from Stripping areas in accordance with Ops timetable	Landscape Manager	Licences approved and translocation completed from Forestry track; 1c; 1f; 1d; 1g; 2&3
			Carry out progressive restoration to heathland and acid grassland	1. Ensure phased working scheme is adhered to so progressive restoration can be carried out in the first available season to provide further heathland habitat	Area of new heathland and acid grassland created	Site Manager	Ongoing
			Balance need for heathland linkages for EPS reptiles with other	1. Carry out tree survey of roadside vegetation and implement recommendations	Survey carried out and hazardous trees	Site Manager	Ongoing. Tree survey completed Q4

			needs for visual screening in long distance views, retention of wooded skyline, retention of bat corridors and management of hazardous roadside trees	2. Implement measures on plan W38m/99 submitted in accordance with ROMP Condition 35	removed  Scheme approved and implemented	Landscape Architect	2022 and trees felled/pruned accordingly  Roadside tree belt gaps interplanted 2017
2	Gallows Hill	Dry heath and acid grassland; habitat linkage between new reinstatement and DWT Higher Hyde Heath NR	Manage and maintain heathland areas restored as trial methodology in 2019  Restore Gallows Hill to heathland in accordance with historic blockworks consent	1. Undertake gorse control incl stump treatment and monitor heather recovery  2. Monitor reptile populations  Agree submission timeframe with DC planners; finalise design in agreement with DWT; submit to DC with Outline Aftercare scheme.	Target <20% gorse cover and 80% heather and desirable acid grassland spp and dwarf gorse  Monitor for sand lizard egg laying and presence of juveniles  Restoration scheme approved and implemented through to completion of Aftercare	Landscape Manager  Ecology consultant  LMRM	c.0.5Ha restored on lorry park and hardstanding area in 2019/2020,  ongoing during Aftercare period  Planning required restoration by Feb 2019. Restore by end 2026, complete Aftercare 2031



3	Positive management of areas outside permitted extraction boundaries	H2a & H2c dry heath; H2c & H3a moist-dry heath; M16 & M25 wet heath; U1 parched acid grassland and associated species e.g. smooth snake; sand lizard; nightjar; woodlark; Dartford warbler; heath bee-fly; mottled bee-fly; mason wasp; marsh clubmoss	Restore heathland extent and quality on remaining landholding outwith ROMP extraction limits through implementation of NE/Defra agri-environment schemes	1. Following completion of initial 10-year HLS, investigate options for submission of remaining heathland areas ("dog&tail" and Lycopodiella SSSI) into Countryside Stewardship or ELMS when new schemes confirmed	Gorse and tree coverage reduce to 5-10% SSSI units 11 & 7 to achieve Favourable status  Remaining land entered into follow-on scheme	Landscape Manager  Landscape Manager	All HLS works 2012-2017 and annual management completed. SSSI Unit 7 already Favourable, Unit 11 (Spratley) now improved to Unfavourable Recovering. Remaining land to await availability of follow-on schemes
	Stakeholder Engagement	Landscape-scale nature recovery	Contribute to Wareham Arc objectives through management & reclamation of existing landholdings and design and implementation of forthcoming Great Plantation working and restoration schemes	1. Maintain engagement with Dorset Wildlife Trust on Gallows Hill reinstatement  2. Liaise with landlords Forestry England and DC planners on design and implementation of Great Plantation schemes, including BNG or other offsetting requirements	Anticipated handover or lease to DWT  Successful planning application and consent granted	LMRM and Landscape Manager  LMRM	Q4 2027 restoration and possible lease  Ongoing for anticipated future life of quarry