

Hanson Fast Set Postfix

Technical Data Sheet



DESCRIPTION:

Hanson Fast Set Post Fix is a simple to use fast-setting concrete mix for fixing fence posts etc in the ground.

It requires no pre-mixing before use. Hanson Fast Set Postfix contains Portland Cement, High Alumina Cement and special additives together with sharp sand and gravel.

APPLICATIONS:

Fence posts, gate posts, line posts and rotary lines.

USAGE RATE:

One bag is sufficient to support a post in a hole measuring 250mm x 250mm x 350mm.

INITIAL SETTING TIME:

Typically 5-10 minutes depending on ambient conditions.

COMPRESSIVE STRENGTH:

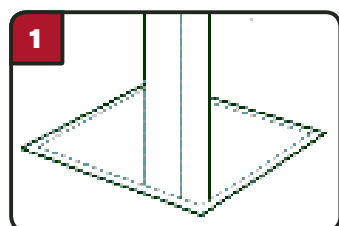
Typically above 2 N/mm² @ 1 hour.

Typically above 3 N/mm² @ 4 hours.

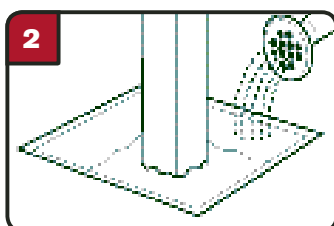
Typically above 20 N/mm² @ 28 days.



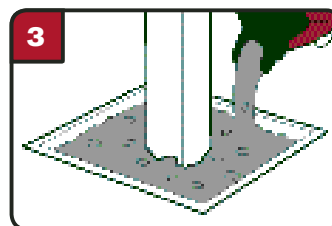
INSTRUCTIONS FOR USE:



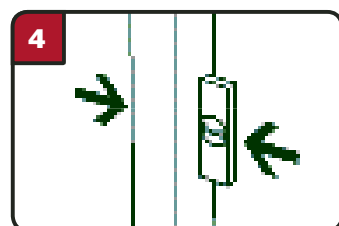
Position post in hole



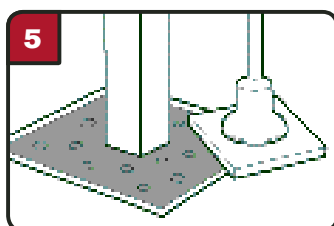
Add two litres of water



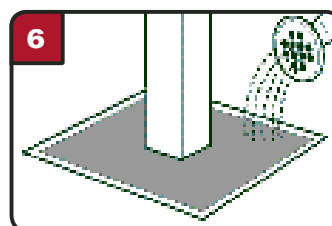
Empty complete bag into hole



Check and adjust post as necessary



Tamp to remove any air bubbles



If necessary, sprinkle more water to mix any remaining powder

LIMITATIONS:

Application temperature: +5°C to 35°C.

Do not use when air temperature is below 5°C or when ground is frozen.

Protect finished work against frost and rain by using hessian or polythene sheeting. In dry or windy conditions, do not allow finished work to dry out too quickly.

ADDITION OF OTHER MATERIALS:

Hanson Fast Set Postfix is a pre-packed post hole concrete. The addition of admixtures is not recommended and could adversely affect the performance of the finished product.

STORAGE CONDITIONS AND SOLUBLE CHROMIUM (VI):

- This product must be stored in unopened bags clear of the ground in cool dry conditions and protected from excessive draught.
- If stored correctly, as detailed above, the chromium (vi) in this product will be within required levels for up to 12 months from the date shown on the bag.
- Use of this product after the declared storage period, as detailed above, may increase the risk of an allergic reaction.

PACKAGING:

Packaged in maxipack fully waterproof bag with carry handles.

AVAILABILITY:

Maxipack – 56 per pallet, maximum weight 1.4 tonnes per loaded pallet.



For further information contact:

Hanson Cement
Ketton
Stamford
Lincolnshire
PE9 3SX

hanson.co.uk

Customer Services:

Tel: 0845 600 1616
(calls charged at local rate)
Fax: 01780 727008
Email: cement@hanson.com