

# Forcett Quarry Site Biodiversity Action Plan



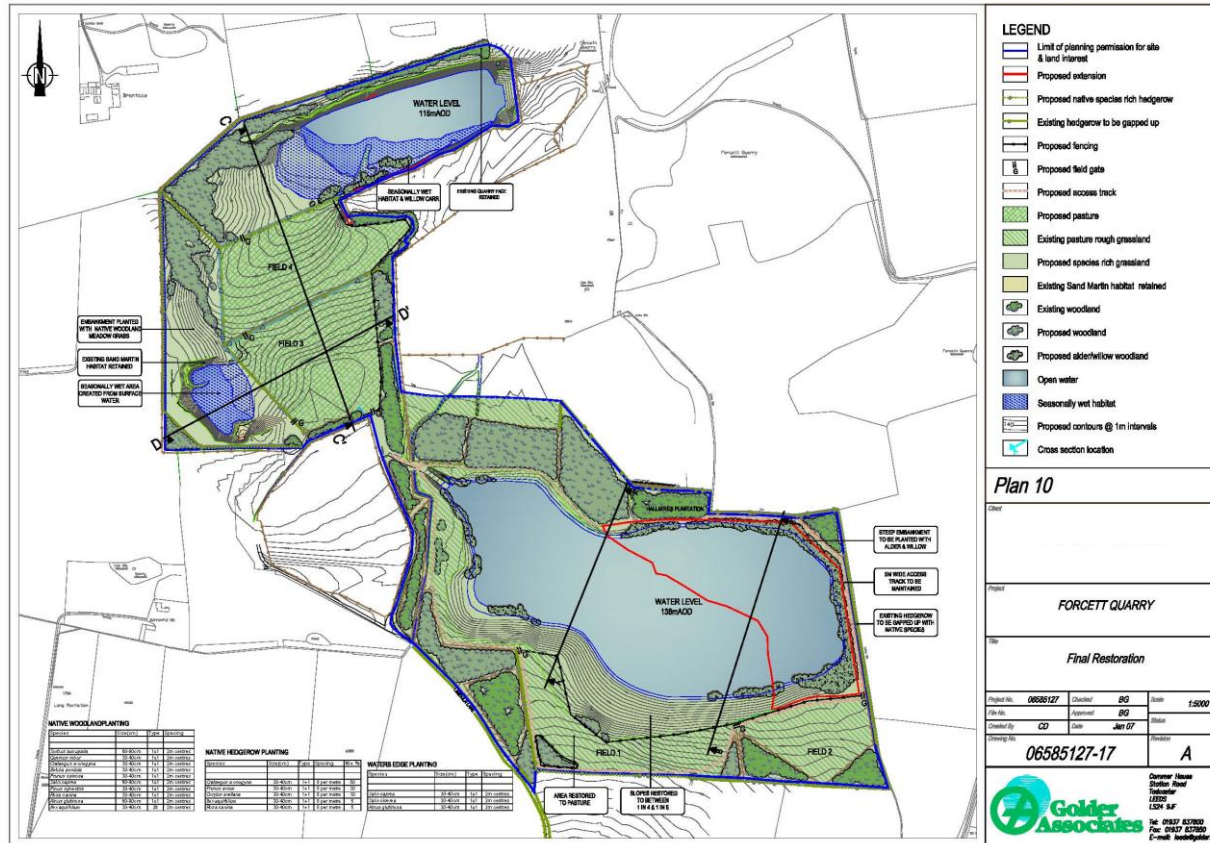
Prepared: December 2010

Updated: December 2013

### Site Information- Forcett

<b>Site Name and Location</b>	Forcett Quarry, approximately 10km north of Richmond, North Yorkshire Grid Ref – NZ155109
<b>Hanson Company</b>	Hanson Aggregates - North
<b>BAP(s) that will be targeted</b>	UK BAP Richmondshire LBAP
<b>Habitat(s) to be developed</b>	Broadleaved woodland (upland and lowland ash, lowland oak and wet woodland**) Scrub** Species rich grassland Standing water ** identified in LBAP as priority for mineral sites
<b>BAP species to be encouraged</b>	<i>Mammals:</i> Bats <i>Birds:</i> Song thrush, Bullfinch, Sand martin, Linnet
<b>Designated Natural Area</b>	Yorkshire and Humber
<b>Background and site description</b>	Extension granted permission in Feb 2008 and was subject to Section 106 agreement which contained an initial management plan for the site for the operational life up to the end of the 5 year aftercare period followed by an additional 10 years. The section 106 requires Hanson to develop the management committee containing representatives from Hanson, NYCC and the landowners and for the group to meet every 6 months. The management group should be consulted on the preparation, implementation and monitoring of the initial management plan and subsequent longer term management plans. The Site is located within an area of productive agriculture with sparse woodland cover. Restoration includes two large waterbodies, woodland and agricultural grassland with areas of fringing habitat for biodiversity
<b>National Designations (SSSI, SAC, SPAs, RAMSARs and NPs) within 500m</b>	None
<b>Resource Requirements</b>	Restoration Budget
<b>Contribution to biodiversity</b>	Quarry set within an area largely intensive agriculture with sparse tree cover and quarry will provide refuge for range of species and link to previously worked areas to the east and large estate lands to the north
<b>Partners and Local initiatives</b>	Forcett Quarry Management committee
<b>Other documents supporting the site BAP</b>	Restoration Plan Management Plan

# Site Layout



## Action Plan

Item No.	Objective	Biodiversity Feature	Targets	Tasks	Assessing Indicator	Responsible Person	Timescale (Completion)
1	To restore, create and manage woodland and hedgerow habitat	Broad leaved woodland Hedgerows	Plant 5.5ha broadleaved woodland  Plant 1630m hedgerows to create connectivity	1.Establish and manage woodland  2. Establish and manage hedgerow by planting, cutting and laying	Ha established and managed  Lin. m. established and managed and detailed in annual report	Landscape Architect	Ongoing until 2031
2	To create scrubby margins to woodland	Scrub	To provide a diffuse margin between woodland and grassland habitats for invertebrates	1.Scrub planting programme (see management plan)  2.Management to maintain a mosaic with grassland	Increase in restored areas. (Ha)	Landscape Architect	Ongoing until 2031
3	To create and manage wetland habitat	Shallow margins for emergent and marginal vegetation to develop  Wet woodland along margins of northern lake	Initially "benign neglect" but with provision for planting (see management plan)  Planting of common alder and willows	1.Monitoring of natural development Annual survey to determine establishment success  2.Planting and natural regeneration	Annual report and increase in woodland and wetland vegetation	Landscape Architect	2016 to 2031
4	To create calcareous grassland	Calcareous grassland	To be established along southern fringe of southern lake	1.Establishment of native limestone grassland using BSH Regional 4 mix or similar (see management plan)	Development of diverse grassland in mosaic with scrub. Annual walkover and recording of species using DAFOR scale during aftercare period. Details in annual report.	Landscape Architect Ecological Consultants	2016 to 2031

					Successful development of sward for grazing		
<b>5</b>	Species conservation and management	Bats Sand martin Song thrush Bullfinch Linnet Common amphibians	Create broad-leaved woodland, hedgerow and scrub habitat to provide nesting for birds, foraging and commuting routes for bats and connectivity between woodland blocks and site margins.  Create grassland/scrub mosaic to benefit a range of invertebrate species including butterflies  Create wetland margins to provide cover for wetland bird species and habitat for common amphibians and range of wetland invertebrates	1. Protect existing known nests/habitats and limit disturbance on site by making site staff aware of habitat areas.  2.Create areas of new habitat to increase site biodiversity as a whole  3.Encourage reporting of sightings of any target species by staff  4.Recognise opportunities to benefit biodiversity during working and restoration and be flexible to accommodate in restoration	Site Manager and Landscape architect to inform site staff and contractors working close to sensitive habitat areas.  Increased reports of presence of target species  Details in annual report.	Site Manager Landscape Architect	Ongoing until 2031
<b>6</b>	To communicate and publicise interesting features on site (where appropriate)	Encourage educational visits	Local schools regard and use site as educational resource	1 or 2 open days or school days/year	No of colleges, schools and students visiting site	Site Manager	On hold until site reopens