

Beer Quarry

Site Biodiversity Action Plan



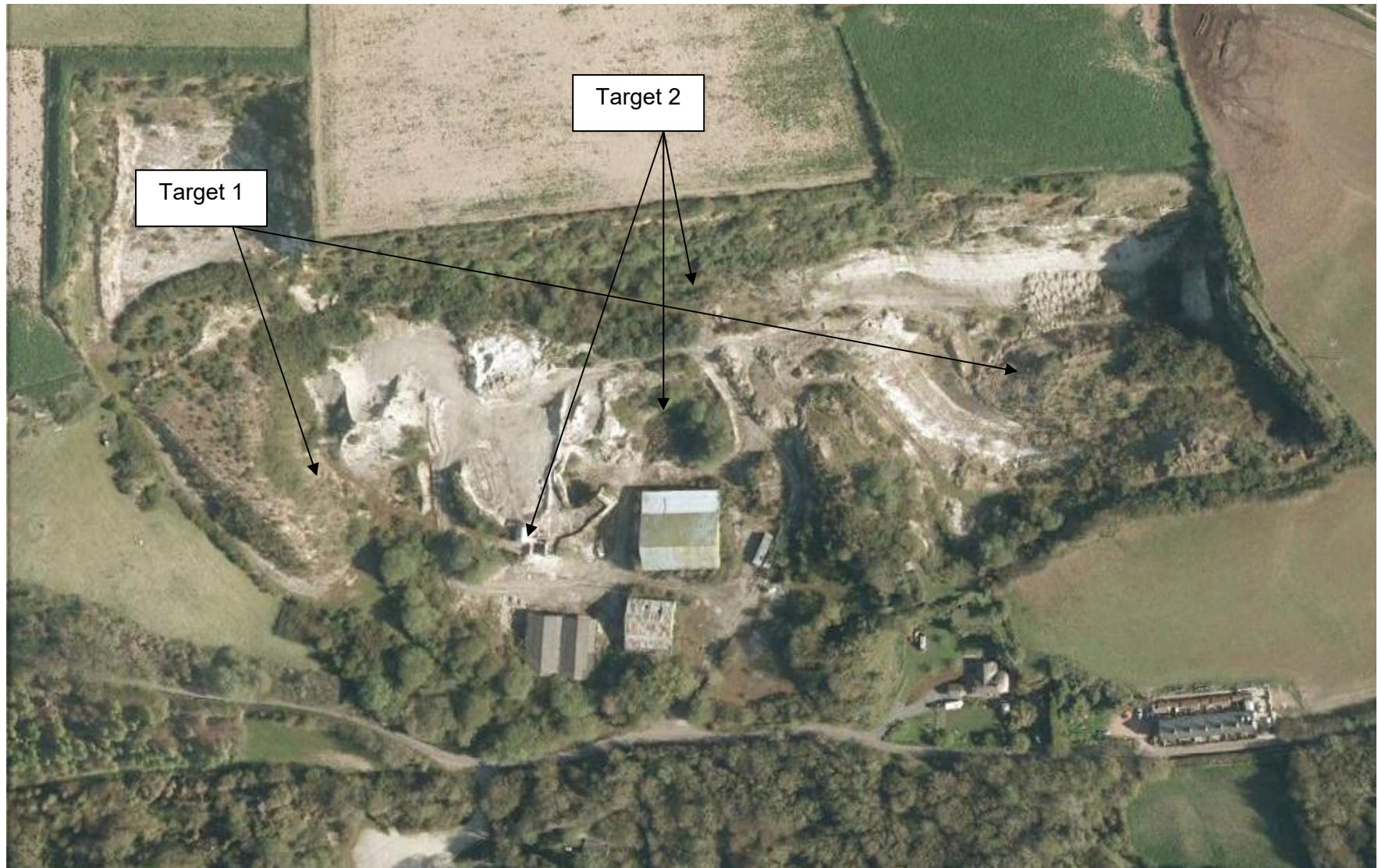
Prepared: November 2012

**Updated: August 2013
January 2019**

Site Information- Beer Quarry

Site Name and Location (incl. Grid Ref.)	Beer Quarry and Caves, Beer, SE. Devon Grid Ref. SY 21491 89438 (site entrance)
Hanson Company	Hanson Aggregates
BAP or other BAP(s) that will be targeted	UK BAP, SW Region BAP, The Nature of Devon (BAP and GAP)
BAP Habitat(s) to be developed	Caves, Karst & Limestone Habitats, Mines and Minerals, Waste Tips, Pits, Quarries and cuttings, Calcareous grassland
BAP species to be encouraged	Bat species, Cirl bunting , Butterfly and moth species associated with calc grassland
Natural Character Area	Blackdowns
Background and site description	Beer Quarry and Caves is a dormant limestone quarry with a mine complex to the north of the main excavation. Mined Beer stone was used for cladding for major public buildings such as cathedrals and museums. Quarrying has occurred on site since Roman times but ceased in the early 1990's. The quarry and caves are part of the Beer Quarry and Caves SSSI SAC, designated because of the populations of eight species of hibernating bats in particular the Bechstein's, Greater and Lesser Horseshoe and also due to the important geological feature of clay-filled chalk pipes on the working quarry face. Beer Quarry is within the East Devon AONB and lies within a rolling pastoral landscape dominated by semi-improved grassland, copses and hedgerows.
National Designations (SSSI, SAC, SPAs, RAMSARs and NPs) within 500m	Beer Quarry and Caves SSSI and SAC nominated due to bat populations and geology (see description)
Resource Requirements- comment on cost if appropriate	Restoration budget is available to pay for some items however volunteers will be used where possible to carry out surveys. Cave security issues will be paid for out of closed unit costs.
Contribution to biodiversity	Currently one unit of the SSSI is deemed by NE to be of 'Unfavourable No Change' condition, new cave security measures will ensure this becomes 'Favourable' by reducing access to the caves and therefore eliminate disturbance by trespassers. The BAP also aims to increase partnership working with local groups and increase the Company knowledge of the site in order to achieve appropriate management and restoration.
Partners and Local initiatives	Natural England, Butterfly Conservation, East Devon District Council
Other documents supporting the site BAP	Quarry restoration scheme B152m/5 SSSI Citation and supporting documents East Devon AONB Management Strategy

Site Layout



Action Plan

Item No.	Objective	Biodiversity Feature	Targets	Tasks	Assessing Indicator	Responsible Person	Timescale (Completion)
1	Monitoring of target species to inform future management	Butterflies/ Invertebrates/	Develop partnerships with local/ national organisations in order to commence butterfly/ invertebrate surveys	1. Contact Butterfly Conservation/ Buglife in order to commence surveys	Surveys commenced. Results reported and management suggestions implemented	Landscape Architect	Surveys commenced by Q2 2022
		Bats	Continue with on-going bat surveys	2. Re-establish surveys if possible.	Surveys conducted and report, advice and proposals received		Surveys commenced 2021
				3. Ensure that surveys continue with results interpreted and suggestions made about habitat management			Ongoing
2	To improve condition of Unit 1 of the SSSI from 'Unfavourable No Change' to 'Favourable'	Disused mine complex used by 8 species of hibernating bat	To achieve 'Favourable' status by erecting barriers across the mine entrances	1. Contact NE to see if the status warrants changing now that trespass has decreased and vegetation has grown to prevent draughts in to cave system	Status changed	Landscape Architect	Contact made by Q4 2019
				2. Maintain anti-trespass barriers.	Barriers erected		Closed unit inspector