

Appledore Wharf

Site Biodiversity Action Plan



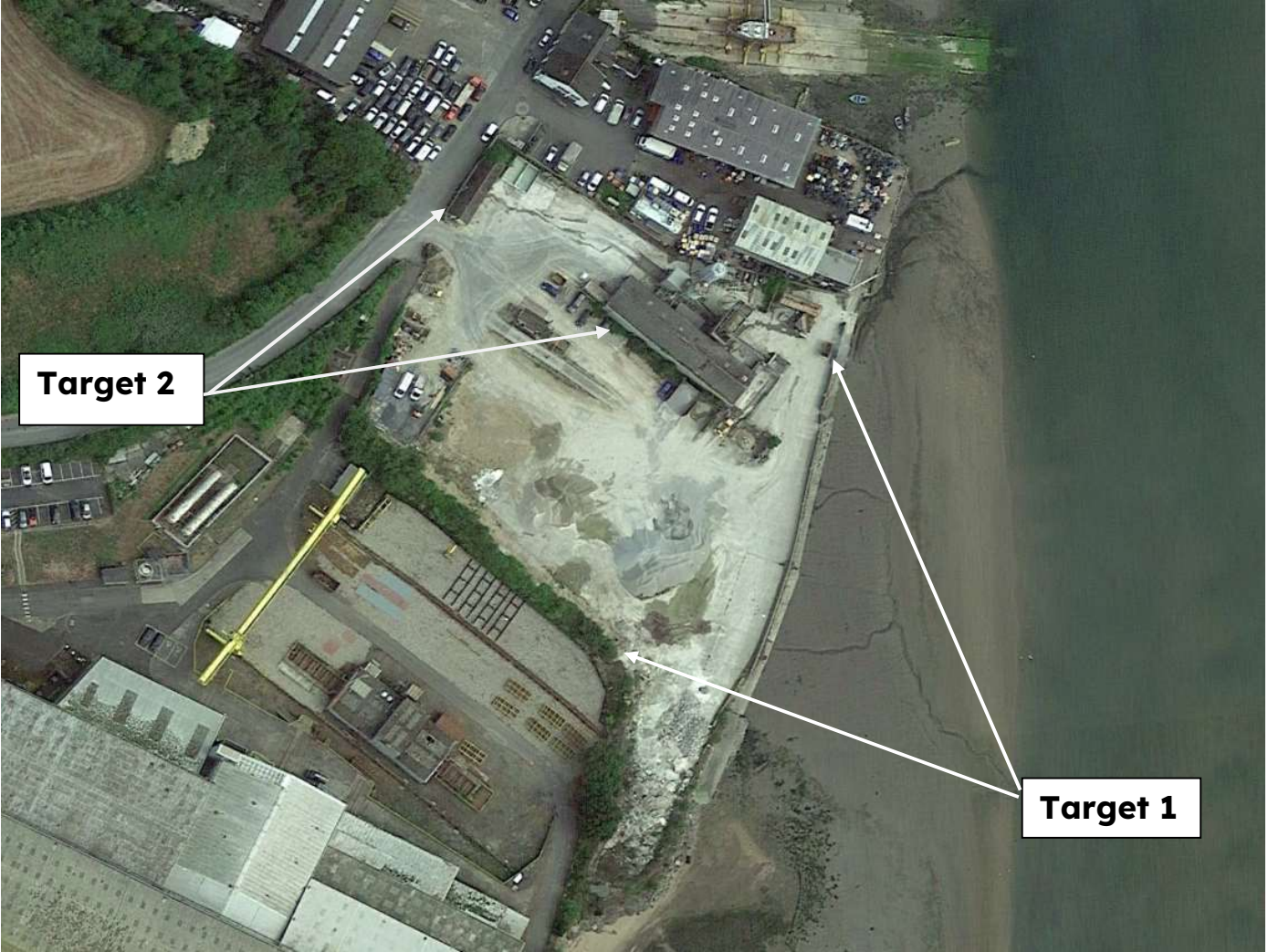
Prepared: August 2024

Updated:

Site Information- Appledore Wharf

Site Name and Location (incl. Grid Ref.)	Appledore Wharf Bidna Yard, Hubbastone Road, Appledore Bideford Devon EX39 1LZ
Heidelberg Materials Company	Marine wharf
BAP(s) that will be targeted	The Devon Biodiversity Action Plan
BAP habitats and species to be encouraged	Birds Bats
Background and site description	Appledore wharf lies on the banks of the Taw- Torridge Estuary 400m to the south of Appledore village. The local estuarine area is rich in nature and is also a popular recreational area for boat users as well as tourists, cyclists and nature enthusiasts. The site is within 5km of both Saunton Sands and Westward Ho! Beaches. Immediately adjacent to the site on the north and south is further industrial development associated with the estuary but to the west is open farmland bounded by hedges.
National Designations (SSSI, SAC, SPAs, RAMSARs and NPs) within 1km	The Taw-Torridge Estuary SSSI is of major importance for its overwintering and migratory populations of wading birds as well as the rare plants that grown along its banks. The estuary has a wide tidal range and the large mud flats and sandbanks along with the salt marshes and beaches provide a varied source of food for many birds and animals. Species of note include curlew, golden plover and lapwing.
Resource Requirements- comment on cost if appropriate	Actions to be paid for from general site costs.
Contribution to biodiversity	Installation of wildlife boxes.
Partners and Local initiatives	N/A
Other documents supporting the site BAP	N/A

Site Layout



Target 2

Target 1

Action Plan

Item No.	Objective	Biodiversity Feature	Targets	Tasks	Assessing Indicator	Responsible Person	Timescale (Completion)
1	To increase the provision of wildlife refugia	Bird sp Bat sp Invertebrate sp	Manage and increase the refuge opportunities for wildlife	1. Retain and manage the southern vegetated boundary	Vegetated boundary	Site Manager/ Landscape Architect	Ongoing
				2. Erect bird and invertebrate boxes on boundary	Boxes installed	Landscape Architect/ Site Manager	Q4 2026
				3. Review options for erecting a pole mounted bat box on waters edge	Options reviewed and box erected if feasible	Landscape Architect	Q4 2026
2	To ensure no harm to wildlife during structure demolition	Birds, bat sp	If demolition is required on site then work to be carried out to ensure no harm to bird or bat species	1. Carry out necessary bird and bat surveys in a timely manner to inform demolition works if required	Surveys complete	Site Manager/ Landscape Architect	If required
				2. Implement mitigation if required as part of task 1	Mitigation installed	Landscape Architect	If required