

Andover Ready-Mixed Concrete Site Biodiversity Action Plan



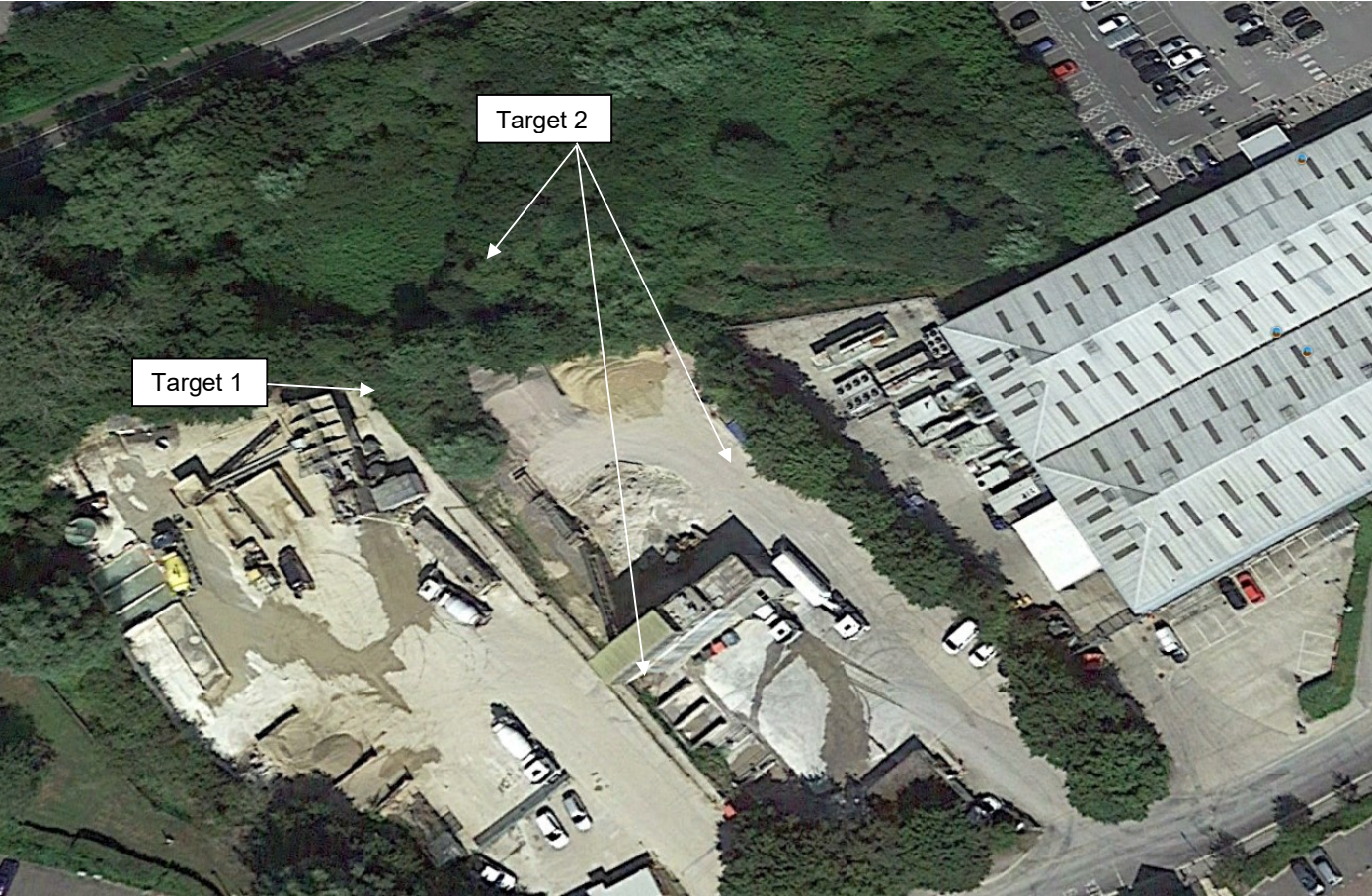
Prepared: December 2023

Updated:

Site Information- Andover Ready-mixed Concrete

| | |
|--|---|
| Site Name and Location (incl. Grid Ref.) | Andover Ready-mixed Concrete, Shepherds Spring Lane Andover, Hampshire, SP10 1DL |
| Heidelberg Materials Company | Ready-mixed Concrete |
| BAP(s) that will be targeted | Delivering a Successful & Sustainable Andover |
| BAP habitats and species to be encouraged | Birds Bats Invertebrates Tree species |
| Background and site description | Located to the north of Andover city centre with easy access to the A3057, A3093 and A343 roads the freehold site lies within a relatively green part of the urban area. The site is 0.32ha in size and is bounded to the north by woodland and scrub and the A3057. To the west is another concrete site operated by a third party, to the east is a large supermarket and opposite the site entrance to the south are a row of houses that back on to Andover cemetery. In the wider locality the land use is primarily urban but there are pockets of woodland and grassland and the lakes associated with the Anton Lakes Local Nature Reserve (LNR) refer below. |
| National Designations (SSSI, SAC, SPAs, RAMSARs and NPs) within 1km | The Anton Lakes LNR is made up of a range of habitats following its use for gravel extraction. The River Anton rises from springs within the reserve, flowing down through a series of old watercress beds, providing a habitat for the locally rare long-stalked yellow sedge. The river then flows into the lakes, which are themselves home to a variety of birds including the beautiful great-crested grebe. The site is also known to be used by otters and water voles and range a good range of invertebrates. |
| Resource Requirements- comment on cost if appropriate | Actions to be paid for from general site costs. |
| Contribution to biodiversity | Potential for increased broadleaved planting and providing niches for birds, bats and invertebrates. |
| Partners and Local initiatives | N/A |
| Other documents supporting the site BAP | N/A |

Site Layout



Action Plan

| Item No. | Objective | Biodiversity Feature | Targets | Tasks | Assessing Indicator | Responsible Person | Timescale (Completion) |
|----------|-------------------------------------|----------------------------|--|---|---|--------------------------------------|----------------------------------|
| 1 | To increase native planting on site | Woodland, scrub, hedgerows | Increase vegetative cover on site if possible to provide habitat for bird, bat and invertebrate species. | 1. Review site for planting opportunities along the western boundary | Site review undertaken | Landscape Architect | Q4 2025 |
| | | | | 2. Draw up planting strategy and implement. | Plan drawn up and planting carried out. | Landscape Architect | Q4 2026 |
| 3 | Provision of wildlife refugia | Bird sp Invertebrate sp | Improve and increase the refuge opportunities for wildlife. | 1. Erect wildlife boxes e.g. bird, bat and invertebrate | No. and type of boxes erected. | Landscape Architect/ Site Manager | Q4 2025 |
| | | | | 2. Review opportunities for coppicing existing vegetation to create log piles | Log piles created | Landscape Architect | Review Q4 2025 Coppicing 2027 |