

# Heidelberg Materials Fast Set PostFix

## Technical data sheet

**Heidelberg Materials Fast Set PostFix is a simple to use fast-setting concrete mix for fixing posts in the ground. It requires no pre-mixing before use.**

Heidelberg Materials Fast Set Postfix contains Portland cement and special additives together with sharp sand and 10mm aggregate. Heidelberg Materials Fast Set PostFix is used for fence posts, gate posts, pergolas, garden lighting and rotary lines.

### Performance

Initial setting time	Compressive strength @ 1 hours	Compressive strength @ 28 days
< 5 minutes	> 2 N/mm <sup>2</sup>	> 20 N/mm <sup>2</sup>

### Conditions of use

- As a general rule, concrete should be placed within the range of 5°C to 30°C.
- In cold weather, setting times may be extended and strength development delayed.
- Freshly placed Fast Set PostFix should be protected from low temperatures to avoid frost damage.
- Heidelberg Materials cannot be held responsible for poor workmanship.
- To avoid premature deterioration of Heidelberg Materials Fast Set PostFix, please follow the correct storage requirements.
- Heidelberg Materials Fast Set PostFix is packed in to plastic bags, they are not fully waterproof and quality will benefit from careful storage.



# Heidelberg Materials Fast Set PostFix

## Technical data sheet

### Rate of usage guidance

Post size	Hole size (width x depth)	Number of bags required
75mm Square (3")	200mm (8") X 450mm (18")	1 bag
	200mm (8") X 600mm (24")	1 bag
	200mm (8") X 750mm (30")	1 bag
	250mm (10") X 450mm (18")	1 - 2 bags
	250mm (10") X 600mm (24")	1 - 2 bags
	250mm (10") X 750mm (30")	1 - 2 bags
100mm Square (4")	250mm (10") X 450mm (18")	1 - 2 bags
	250mm (10") X 600mm (24")	1 - 2 bags
	250mm (10") X 750mm (30")	1 - 2 bags
	300mm (12") X 450mm (18")	1 - 2 bags
	300mm (12") X 600mm (24")	2 bags
	300mm (12") X 750mm (30")	2 - 3 bags

### Storage

Bags should be stored unopened, clear of the ground in cool dry conditions and protected from excessive draft and all sources of moisture. The maximum shelf life the product is 12 months from date of manufacture which is stated on the bag

### Hexavalent Chromium (VI)

The soluble chromium (VI) content is limited to a maximum of 2ppm. The chromium (VI) content is determined in accordance with EN 196-10. The maximum shelf life of the product is stated on the bag.

### Health and Safety

Cement causes skin, eye and respiratory irritation, severe burns and dermatitis. Always wear suitable personal protective equipment (PPE) and refer to the full Material Safety Data Sheet (MSDS) for further information.

### Technical support and further information

For further advice please contact Heidelberg Materials cement technical support on **0330 123 4525** or **cement@uk.heidelbergmaterials.com**

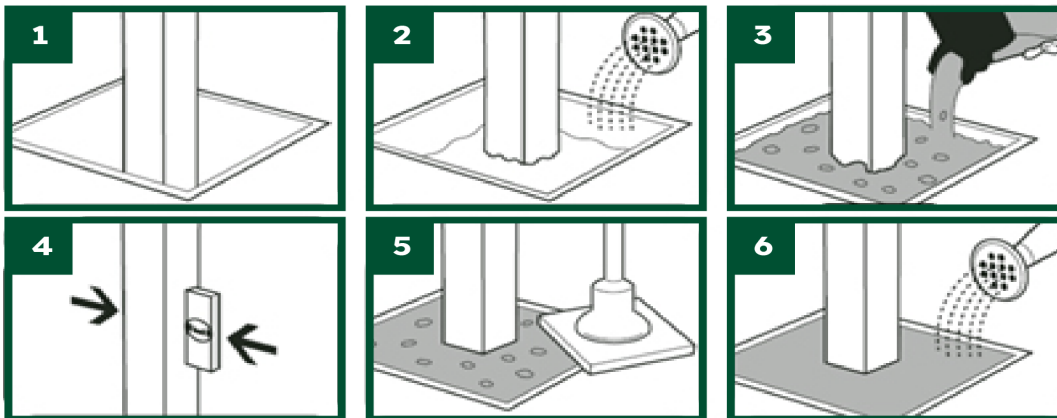
**Further copies of this technical data sheet may be obtained from [heidelbergmaterials.co.uk](http://heidelbergmaterials.co.uk)**

# Heidelberg Materials Fast Set PostFix

## Technical data sheet

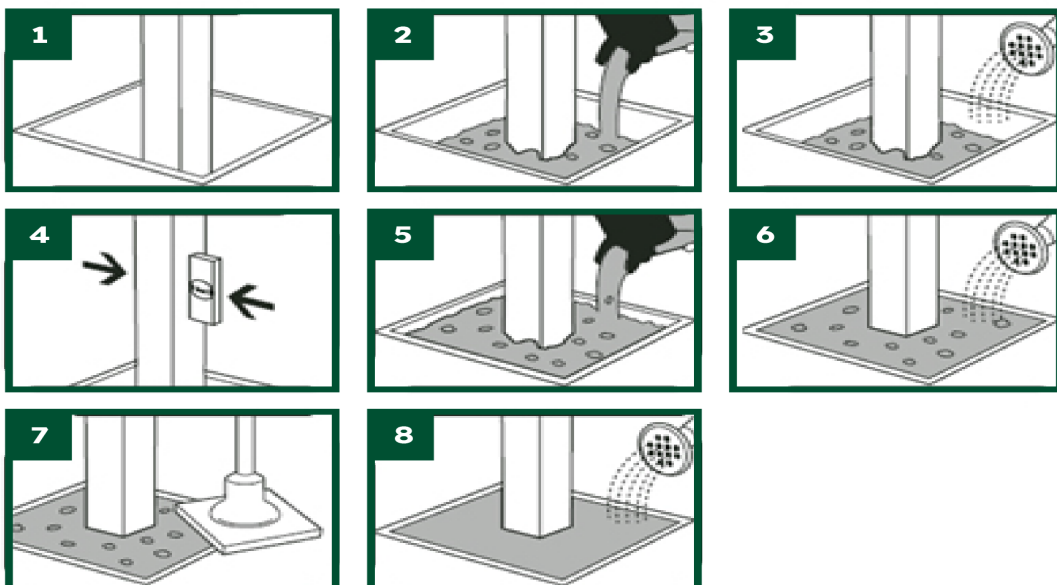
### Instructions for use

1. Position post in hole
2. Add two litres of water
3. Empty the complete bag into hole around the post
4. Check the position of the post, level and adjust as necessary
5. Tamp to remove any air bubbles
6. If necessary, sprinkle more water to mix any remaining powder left on the surface.



### Alternative instructions for use

1. Position post in hole
2. Empty half of bag into hole
3. Add 1 litre of water
4. Check the position of the post, level and adjust as necessary
5. Add rest of bag
6. Add another 1 litre of water
7. Tamp to remove any air bubbles
8. If necessary, sprinkle more water to mix any remaining powder left on the surface.



Allow 5 minutes for initial set to take place – following this, the post will remain in a vertical position unsupported. Postfix will achieve appreciable strength after 4 hours depending on ambient conditions but is best left overnight before attaching fence panels etc.